

Do You Have An

# Invasive Attitude?



What's An Invasive

# Invasive Attitude?

It's not hard...

It's not dangerous...

I can make a difference...



# I CAN Make A Difference!

60% of Invasive Preparedness is plain old **Good Land Stewardship**

30% is **Invasive Thinking**

10% is **Specialized Knowledge** (about botany or pesticides)

---

**BOTTOM LINE?**

90% of Invasive Preparedness is  
Easily Within Your Reach.

# The EASY EIGHT:

Eight invasive plants that you can identify and control  
WITHOUT Ph.D.s in botany and chemistry.

## Criteria:

Easy to Recognize, No Common Native Look-a-Like

Commonly Encountered in Rhode Island

Responds Relatively Well to Basic Control Techniques

## 1. Oriental Bittersweet

Cut major stems you see climbing trees

Paint the stumps with herbicide



## 2. Barberry (both Japanese and European)

Clip or Mow, Repeatedly

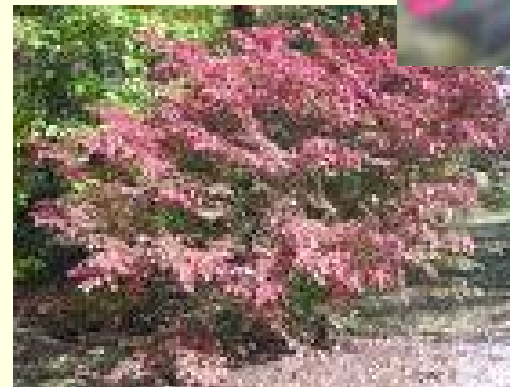
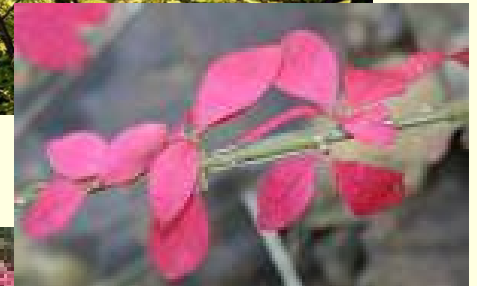
Paint the stumps with herbicide,  
if necessary



### 3. Winged Euonymus (a.k.a. Burning Bush)

Pull

Clip and Paint the stumps



## 4. Autumn Olive (and the similar Russian Olive)

Cut

Paint the stumps  
as necessary



## 5. English Ivy

Cut vines climbing trees

Paint the stumps

Pull vines on ground



## 6. Privet (any of the many varieties)

Pull

Clip and Paint the stumps

Dispose of with Care as Cuttings  
easily Resprout



## 7. Garlic Mustard

Pull, Dispose of carefully

Spray with Herbicide



## 8. Multiflora Rose

Cut major stems climbing trees

Paint or spray stumps with herbicide

Mow and paint the stumps

Pull or dig in fields



## The EASY EIGHT:

1. Oriental Bittersweet
2. Barberry (both Japanese and European)
3. Winged Euonymus (a.k.a. Burning Bush)
4. Autumn Olive (and the similar Russian Olive)
5. English Ivy
6. Privet (any of the many varieties)
7. Garlic Mustard
8. Multiflora Rose

## The **SECONDARY SIX:**

These six invasive plants are relatively easy to identify but very hard to control once established. They are presented here because early detection and rapid response is your best bet.

### Criteria:

Established populations of these plants are extremely difficult or even impossible to eradicate even with chemicals and at any rate efforts at large scale eradication will almost certainly produce "collateral damage." It is, therefore, important to learn to identify these species and act swiftly to eliminate small populations when found.

## The **SECONDARY SIX:**

1. Swallow-wort (Black and Pale)
2. Common Reed (a.k.a. *Phragmites australis* or "Phrag")
3. Japanese Honeysuckle
4. Purple Loosestrife
5. Knotweed (a.k.a. American Bamboo)
6. Yellow Iris

1. Swallow-wort (Black and Pale)
2. Common Reed (a.k.a. *Phragmites australis* or "Phrag")



3. Japanese Honeysuckle
4. Purple Loosestrife
5. Knotweed (a.k.a. American Bamboo)
6. Yellow Iris



# Water Chestnut



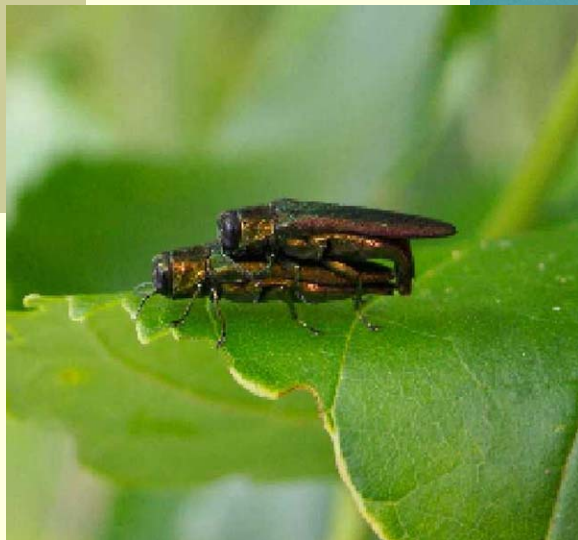
# Animals

Zebra Mussel

Chinese Mitten Crab

Emerald Ash Borer

Asian Long Horn Beetle



# Invasive Thinking



# Specialized Knowledge

Invasive Problem?...YOU can help yourself, usually...

But when you DO get slimed... who ya gonna call?

These guys?



OR

C.S.C.

